

Health - Entropion



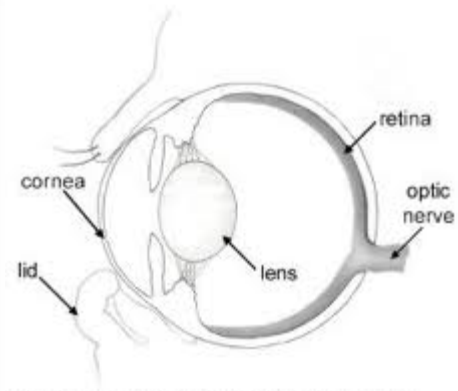
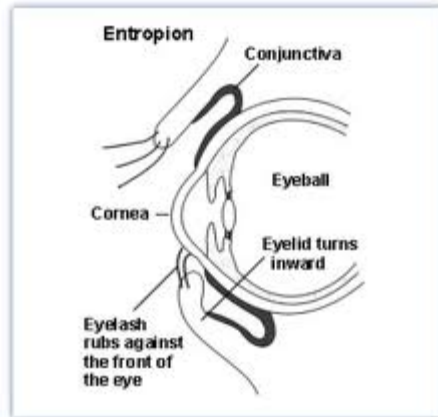
Entropion is the inward rolling of the eye (often the lower lid) which means that the eyelashes or hair surrounding the area, rubs on the eyeball and causes intense irritation. If you can imagine what it's like when you have an eyelash in your eye, you will realize the pain a dog endures. If left untreated, the condition may ultimately cause visual impairment. This is a common hereditary/congenital condition in dogs.

Breeding for prominent facial features with prominent eyes and/or heavy facial folds has worsened the problem in many breeds.

This problem is usually evident before a year of age. Symptoms of entropion include increased tearing and squinting of the eye. In addition your dog may be light sensitive and paw at his/her eye in an attempt to stop the irritation. If a dog has surgical intervention to repair entropion it cannot be exhibited in the show ring, although it can still compete in working events.

It is good breeding practice not to breed from dogs affected by entropion.

Entropion is a common eye issue for the Bracco, and is looked for in the CERF exam. It is most common in dogs with a lot of facial skin, and is most likely hereditary. The exact mode of inheritance isn't known. It is closely related to ectropion, and sometimes a dog can have both conditions (even on the same eye).



Adapted from D Slater, Fundamentals of Veterinary Ophthalmology, 1990 Philadelphia, WB Saunders